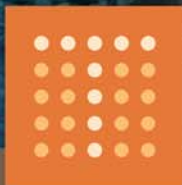


storm water management training



thompson
ENGINEERING

celebrating 57 years of
engineering excellence

Qualified Credentialed Inspector Program storm water management training

Objectives

The objectives of the Thompson Engineering Qualified Credentialed Inspector (QCI) Program are to provide training in storm water pollution prevention regulations and requirements, and to provide practical instruction in performance-oriented best management practice (BMP) inspection and maintenance. Thompson Engineering is approved by the Alabama Department of Environmental Management (ADEM) as a provider of this training program.



Company Overview

Thompson Engineering develops and delivers erosion and sediment control training classes to engineers, planners, inspectors, and contractors in Alabama, Florida, Louisiana and Mississippi. We create customized training workshops, seminars, and field exercises that help protect the environment and ensure compliance with regulatory

requirements. Thompson personnel also make presentations to civic and community groups on storm water pollution prevention, best management practices, and other issues related to water quality.

Founded in 1953, Thompson Engineering is a multi-disciplined engineering design and environmental consulting firm. Our staff includes over 320 experienced personnel, providing a broad and diverse line of services. In the past 57 years, we have grown from a local firm providing basic soils and materials tests into a full-service architectural/engineering firm with multiple office locations throughout the Southeastern United States.





storm water management training courses

Training Team

Lead Instructor

Carl A. Pinyerd, III, CPESC, CPSSc, CHMM

Training Coordinator

Cindy Roton

Instructors

Wilson B. Folmar, PE, CPESC, CPSWQ

David L. Upton, PE

William J. O'Bannon, CPESC

Consultant Instructors

Joel D. Seawell, CPESC

Erosion Pros, LLC

John C. Carlton, CPESC

Former Chief, Mobile Branch - ADEM (Retired)

Administrative Team

Priscilla Thomas

Celeste Viola

What Our Students Are Saying . . .

“Comprehensive training given in layman’s terms with good visual examples.”

“Excellent course! I’ve learned a lot about BMPs. I will definitely be sharing my notes with my contractors.”

“Representation of topics was great; the trainers knew the material very well.”

“Excellent workshop! Very well organized. Consistent material from start to finish.”

“Tells you exactly what has to be done to prevent erosion and reduce pollution.”

About our courses

Thompson Engineering offers a one-day (8-hour) initial course and a half-day (4-hour) refresher course. Each course features a virtual tour highlighting both functioning and non-functioning BMPs on construction sites.

Initial Training (8-hour)

- Introduction and Overview
- NPDES Regulations (ADEM Rule)
- Erosion and Sedimentation Basics
- Pollution Prevention Principles
- Erosion Control BMPs
- Sediment Control BMPs
- Permanent BMPs
- Product Demonstrations
- Construction Site Inspection
- BMPs Gone Bad
- Summary and Conclusion

Refresher Training (4-hour)

- NPDES Regulations (ADEM Rule) - Review and update
- BMP Review
- New-and-Improved BMPs
- Construction Site Inspection Review

For a schedule of courses, fee schedule, and registration form please visit our storm water training website at www.thompsonengineering.com or contact Cindy Roton at 251.665.5414.

CORPORATE HEADQUARTERS
2970 Cottage Hill Road, Suite 190
Mobile, Alabama 36606
251.666.2443
251.666.6422 fax

www.thompsonengineering.com